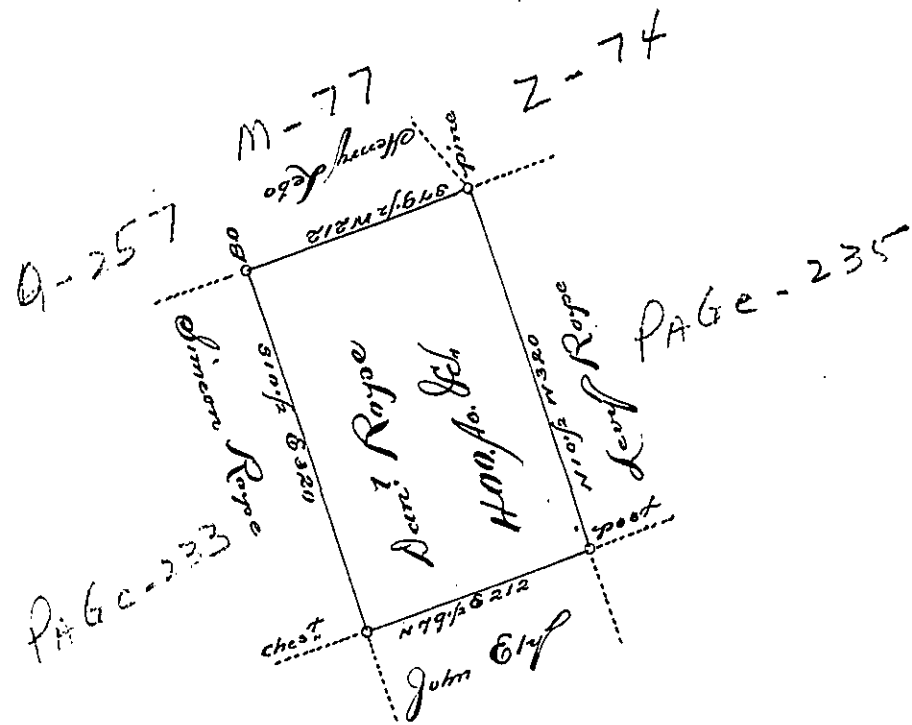


Hazle
Luzerne



A Draft of a tract of Land Called *new Situate in the County of North*
joining land surveyed Simeon Royce & others. Containing four Hundred acres
& Allors. Surveyed for Daniel Royce the 14th day of October 1793. by
virtue of a warrant dated 13th day of June 1793.

by *Wm. Gray D.F.*

To Daniel Bradhead Esq^r
Survey Gen^l

IN TESTIMONY that the above is a copy of the original remaining on file in the
 Department of Internal Affairs of Pennsylvania, made con-
 formably to an Act of Assembly approved the 16th day of
 February, 1833, I have hereunto set my Hand and caused
 the Seal of said Department to be affixed at Harrisburg, this
sixth day of August, 1895.

James W. Fatta
 Secretary of Internal Affairs.